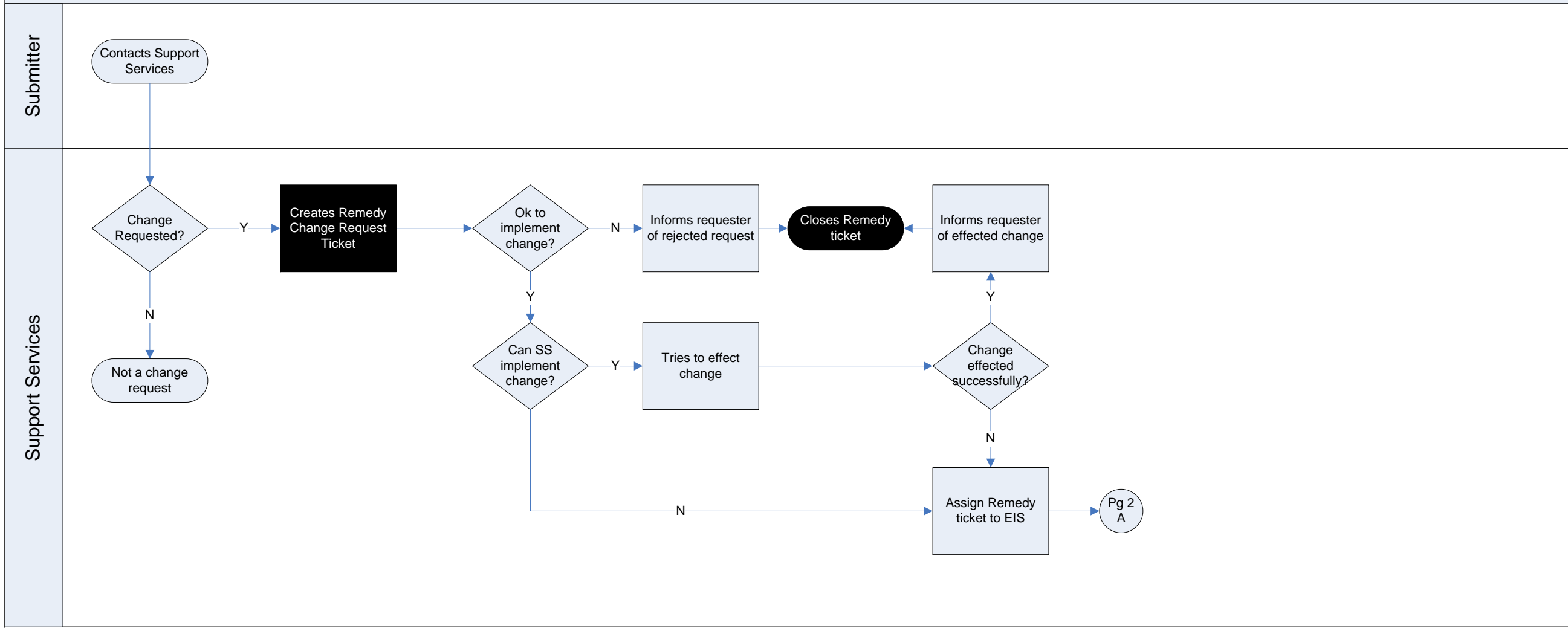
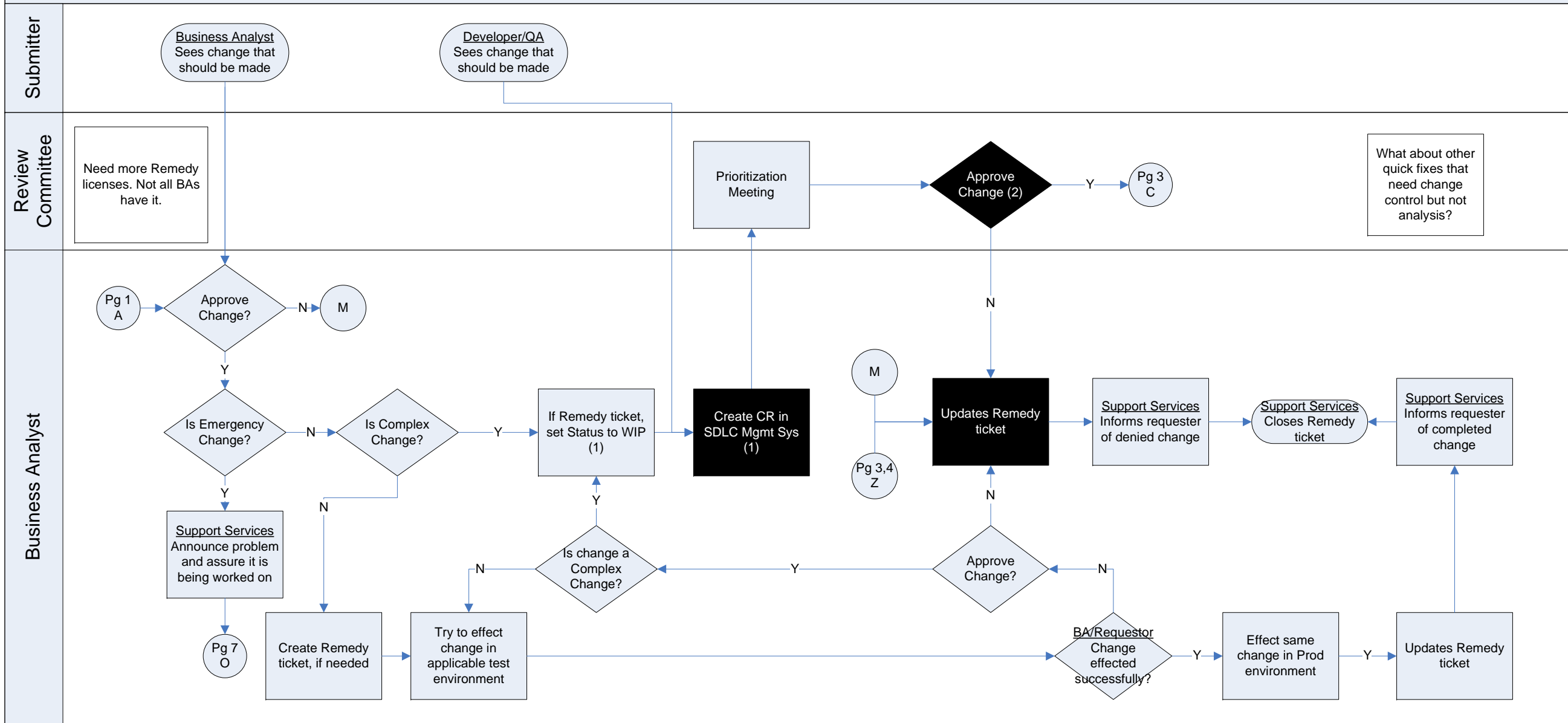


SDLC Cross Functional Process Flow



Notes
 Darkened background indicates additional information is available in IT Policies and Procedures.

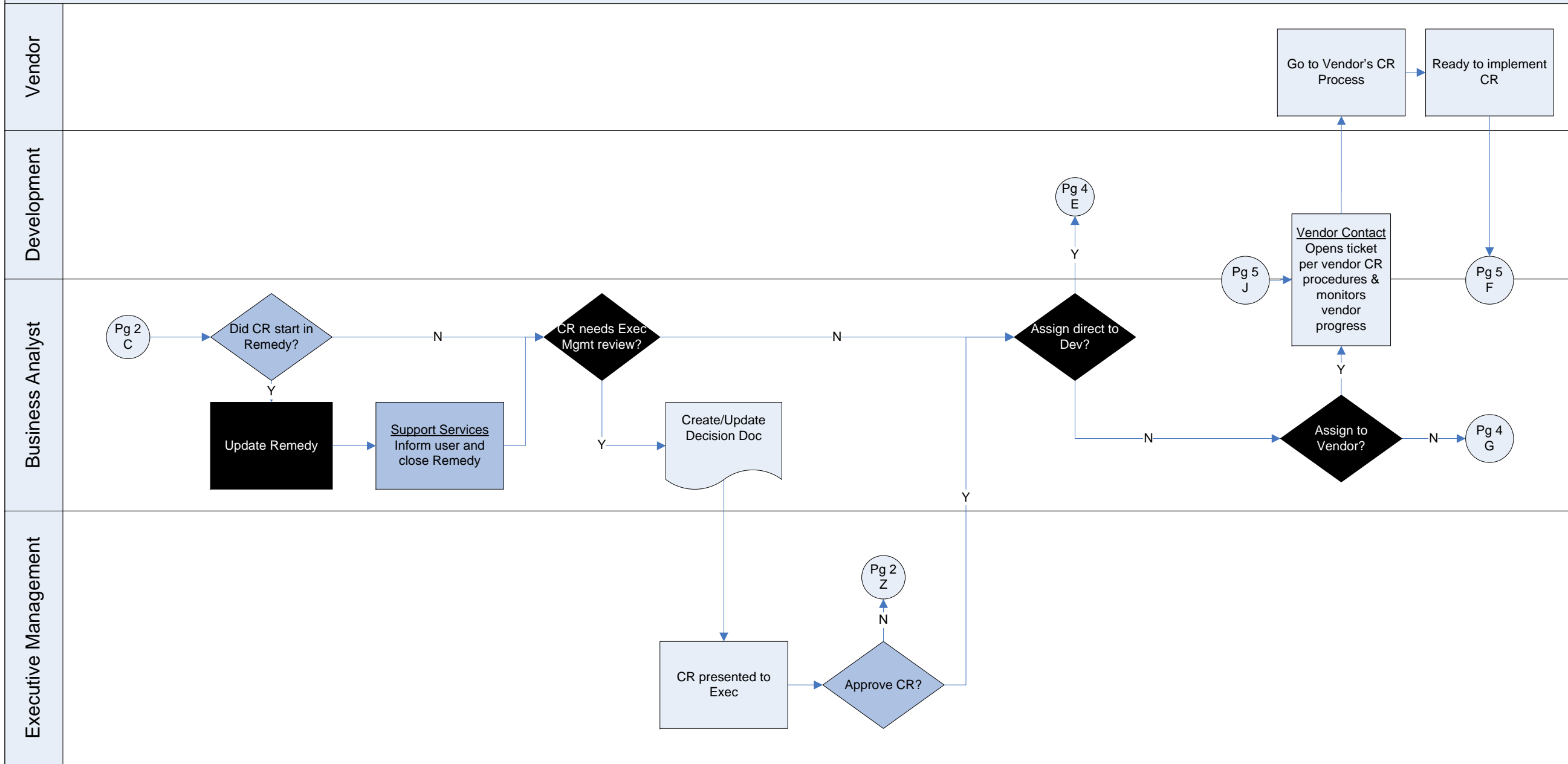
SDLC Cross Functional Process Flow



Notes

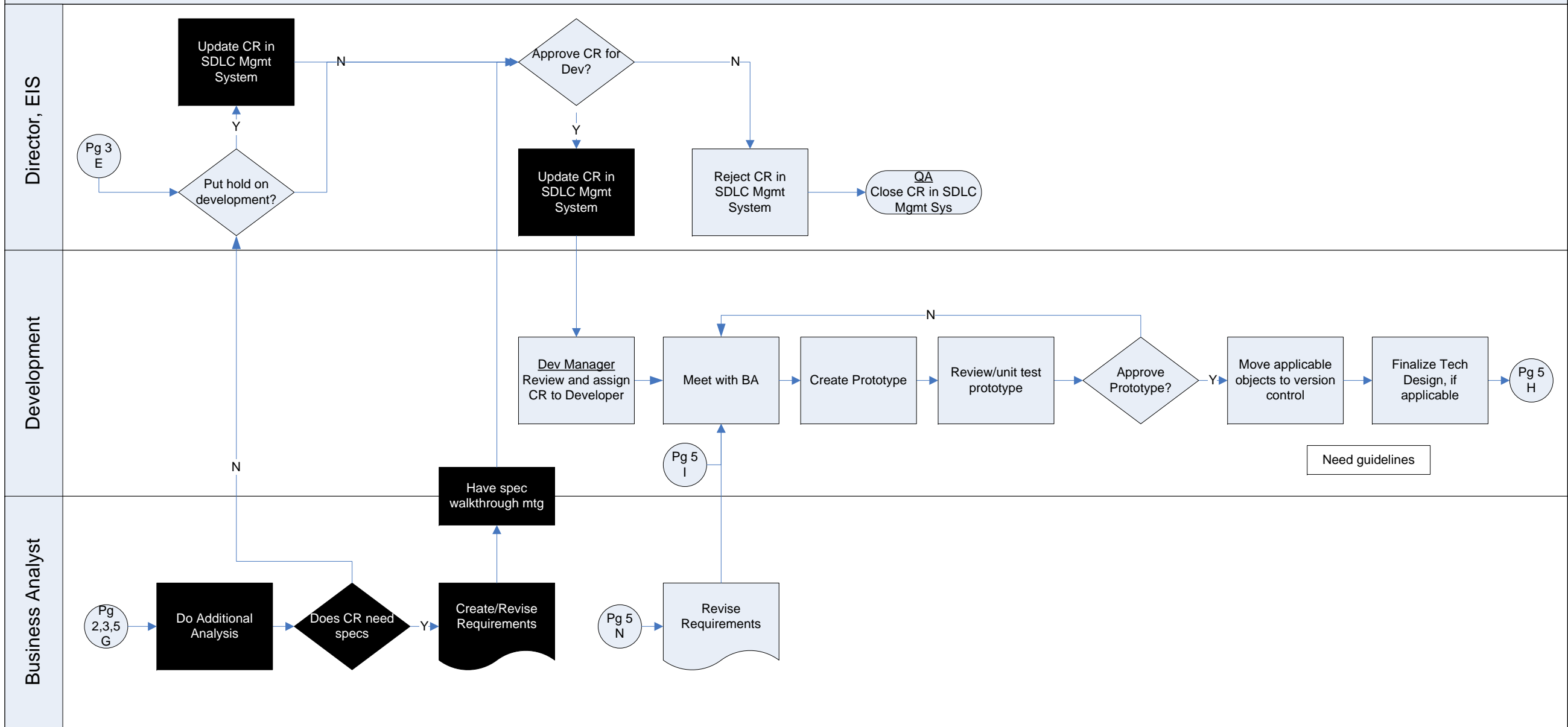
Darkened background indicates additional information is available in IT Policies and Procedures.
 (1) Remedy and Change Request numbers are cross-referenced in each system, if applicable.
 (2) Update SDLC Management System

SDLC Cross Functional Process Flow



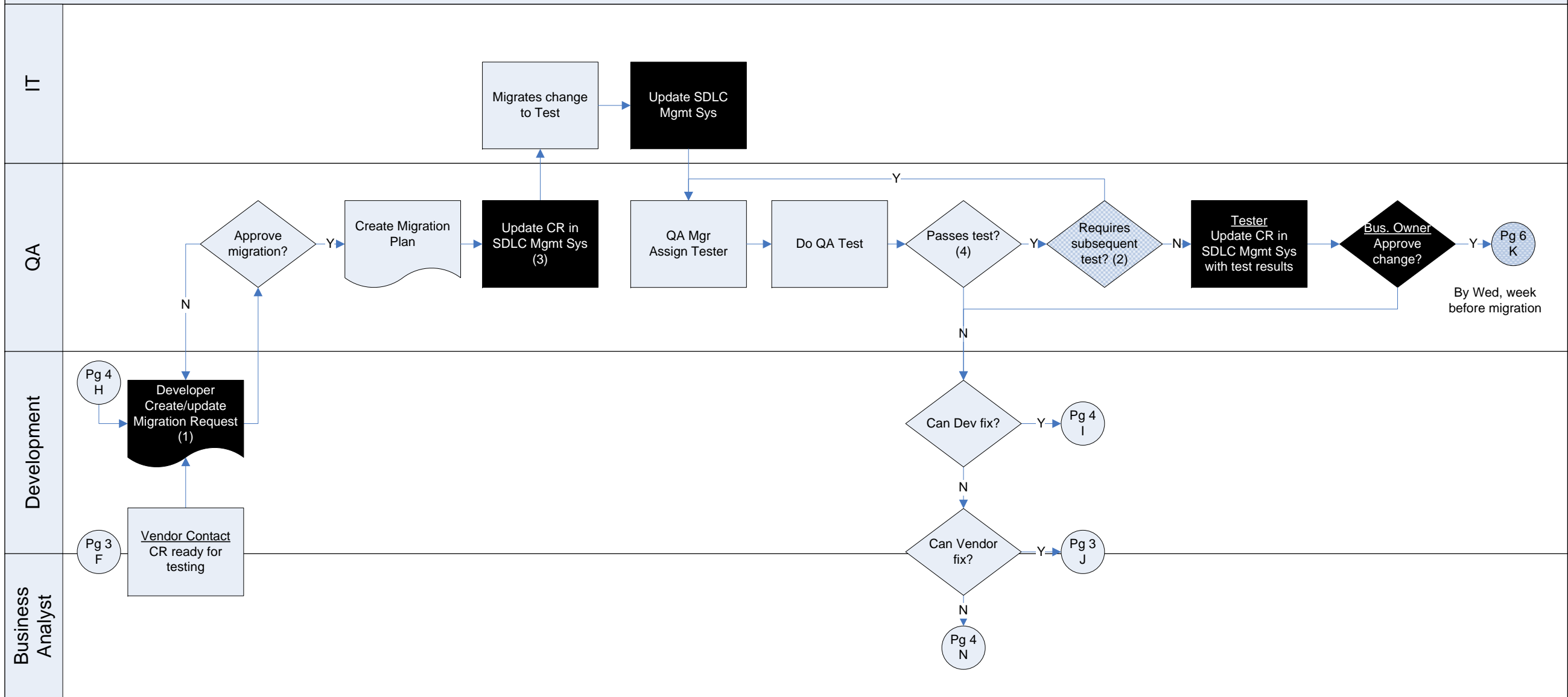
Notes
Darkened background indicates additional information is available in IT Policies and Procedures.

SDLC Cross Functional Process Flow



Notes
Darkened background indicates additional information is available in IT Policies and Procedures.

SDLC Cross Functional Process Flow

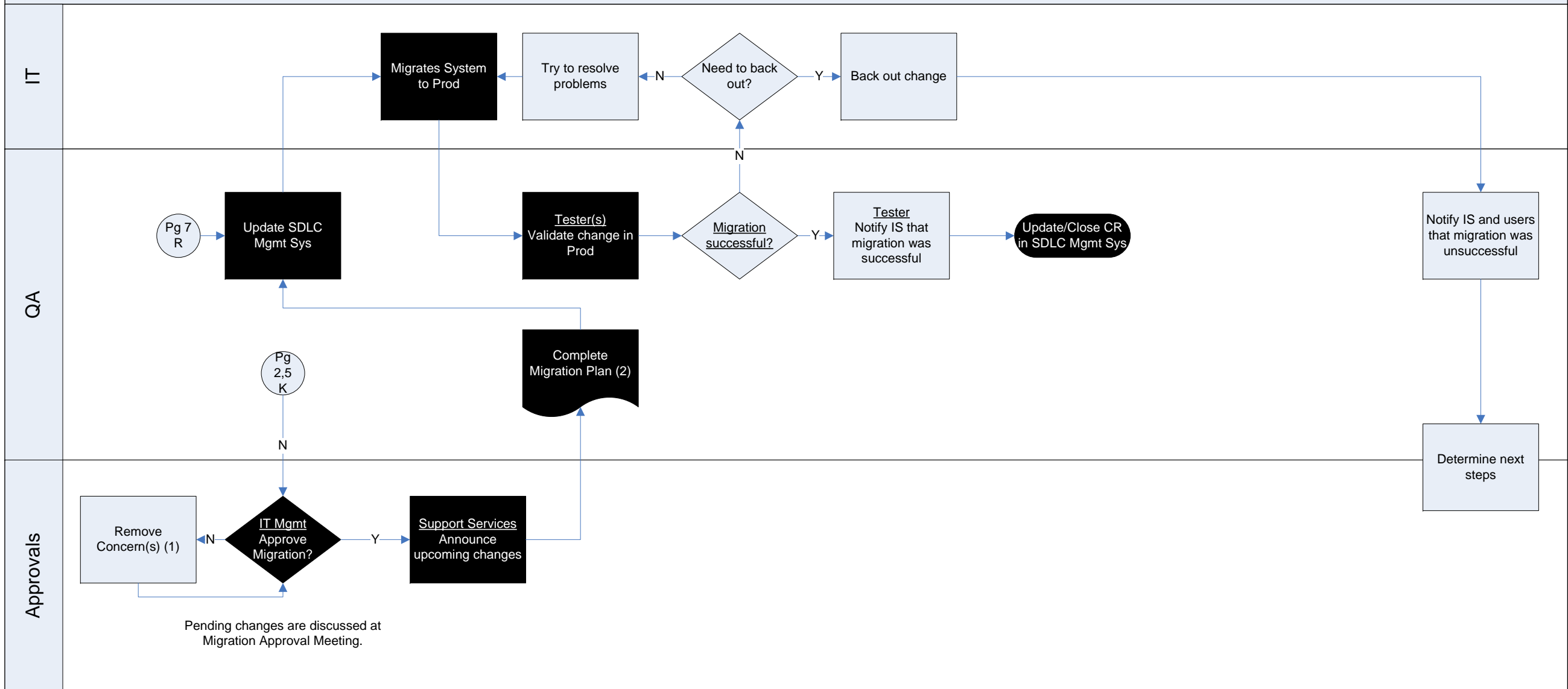


Notes

Darkened background indicates additional information is available in IT Policies and Procedures.

- (1) Developer creates Migration Request and attaches to CR.
- (2) Subsequent test would be system, regression, UAT, performance, etc. testing.
- (3) If migration is complex, create migration plan.
- (4) Update SDLC Mgmt Sys with results of testing.

SDLC Cross Functional Process Flow



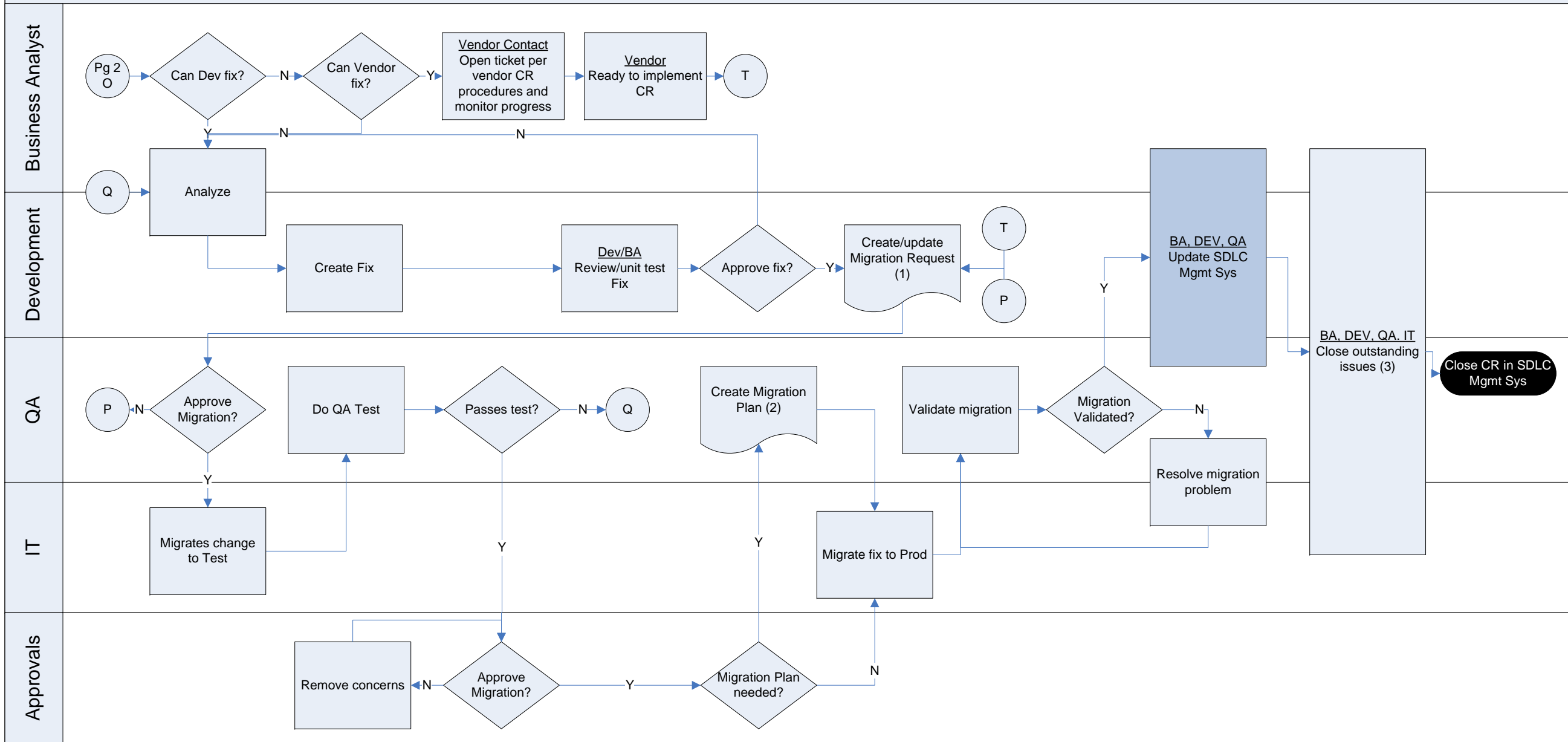
Notes

Darkened background indicates additional information is available in IT Policies and Procedures.

(1) Applicable person/group removes obstacle.

(2) If change requires migration plan

Emergency SDLC Cross Functional Process Flow



Notes

- Darkened background indicates additional information is available in IT Policies and Procedures.
- (1) Developer creates Migration Request and attaches to CR.
 - (2) If migration is complex, create migration plan.
 - (3) Close Dev acct in Prod, if needed; sync environments, define next steps.